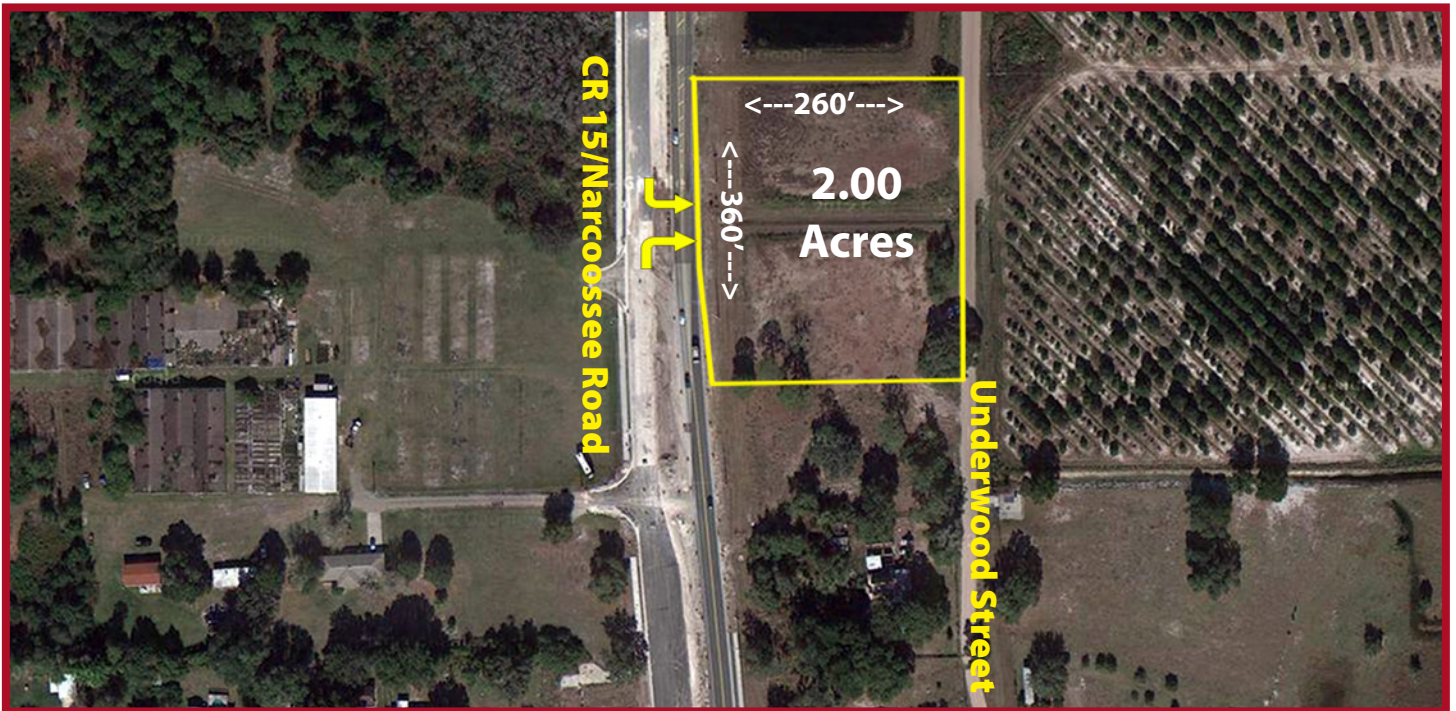




2 Acre Commercial Lot

1155 N Narcoossee Rd
Saint Cloud, FL 34771

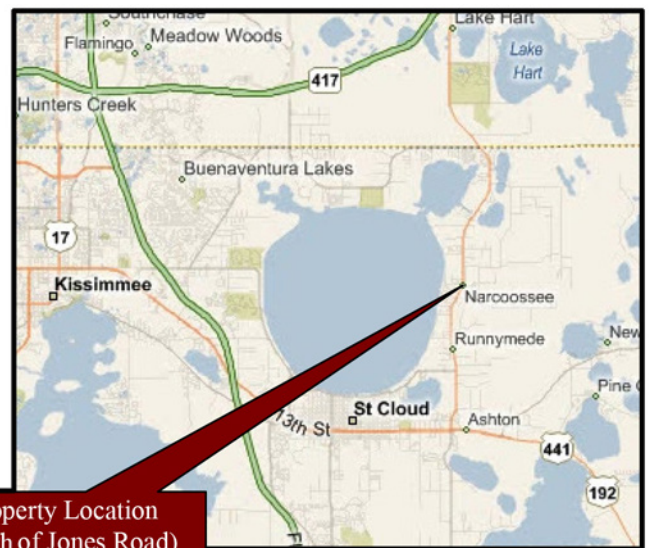
BUILD TO SUIT



Key Property Highlights

- 360 ft Road Frontage on Narcoossee Road
- 2 Acres Ready for Development
- Near the New Medical City at Lake Nona
- All utilities to site
- Site filled to grade

Commercial restricted zoning allows:
Retail, Office, Medical and Restaurant Uses



Property Location
(North of Jones Road)

Demographics	1 Mile	3 Miles	5 Miles
2013 Population	6,592	9,299	31,131
2013 Households	2,280	3,219	11,151
2013 Avg. HH Income	\$76,002	\$79,250	\$65,243



For More Information
Visit Our Website
www.ReichProperties.com
or call (407) 847-4888



Narcoossee Trading Post

1155 N Narcoossee Rd
Saint Cloud, FL 34771

BUILD TO SUIT

