



2,000 SF Dental / Medical Space

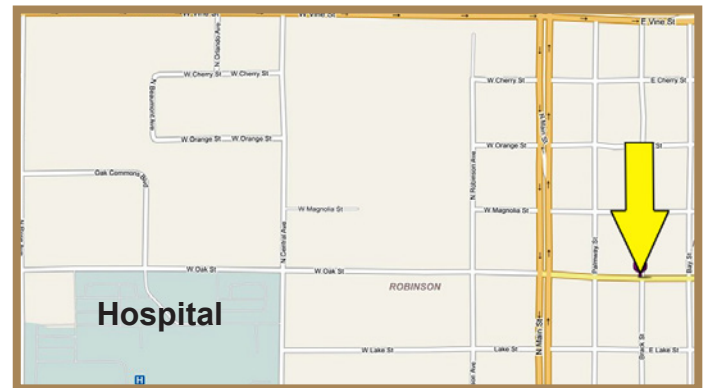
217-221 East Oak St
Kissimmee, FL

FOR LEASE



Key Property Highlights

- A+ Dental / Medical Space Available
- +/- 2,000 Sf with Medical Improvements in place
- Frontage and Great Visibility on Oak Street
- Conveniently Located Near the hospital and the Historic Downtown Business Center
- Space includes:
 - 5 exam rooms
 - 2 restrooms
 - 2 offices
 - a lab
 - a break room
 - and one waiting room



Demographics	1 Mile	3 Miles	5 Miles
2013 Population	10,126	66,183	163,310
2013 Households	3,532	22,784	53,878
2013 Avg. HH Income	\$42,966	\$47,082	\$54,511

Traffic Count on Oak Street: 27,000 cars per day

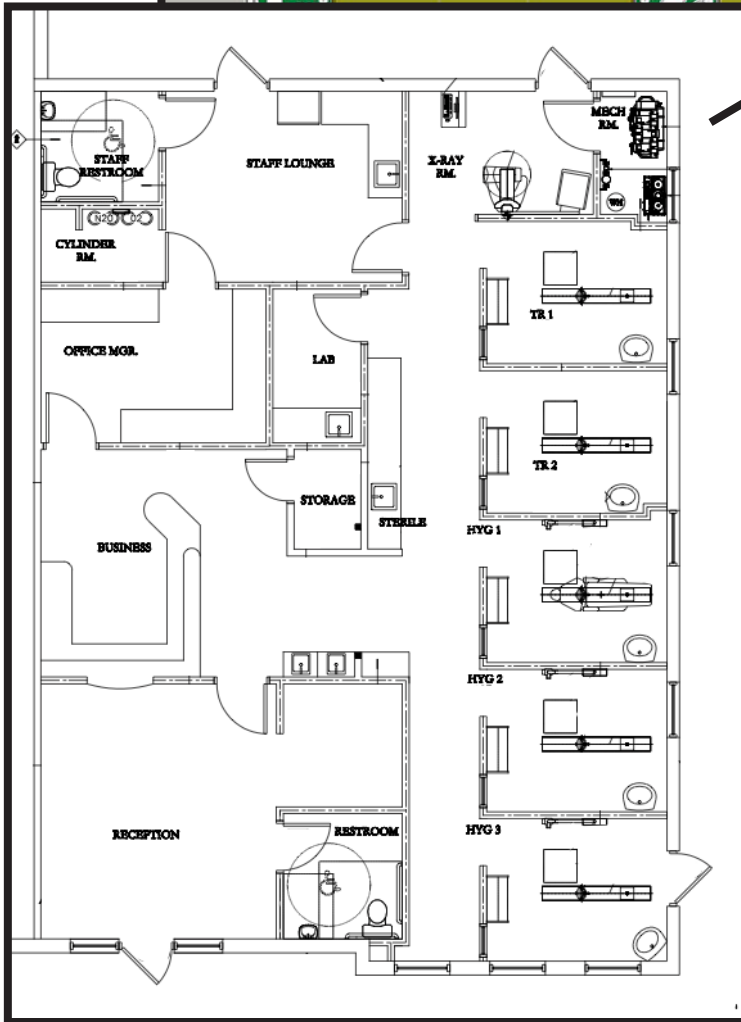
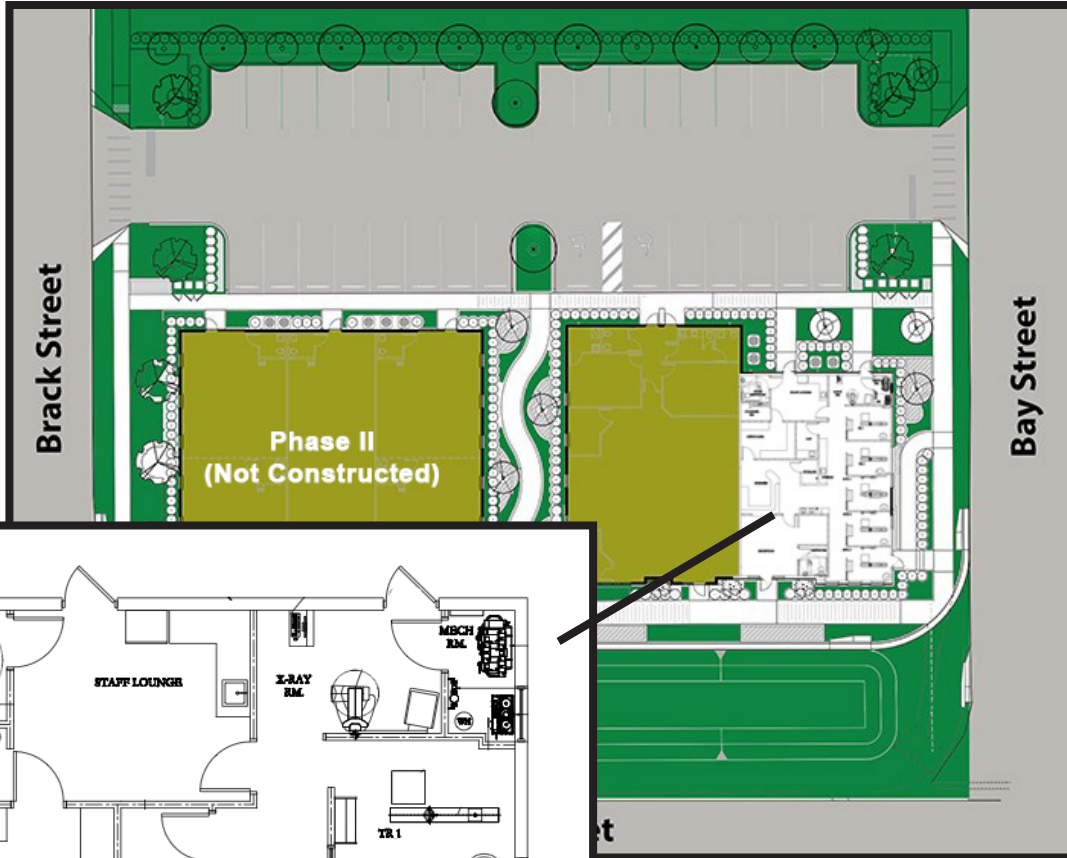




East Oak Plaza

217-221 East Oak St
Kissimmee, FL

FOR LEASE



- Space includes:
 - 5 exam rooms
 - 2 restrooms
 - 2 offices
 - a lab
 - a break room
 - and one waiting room